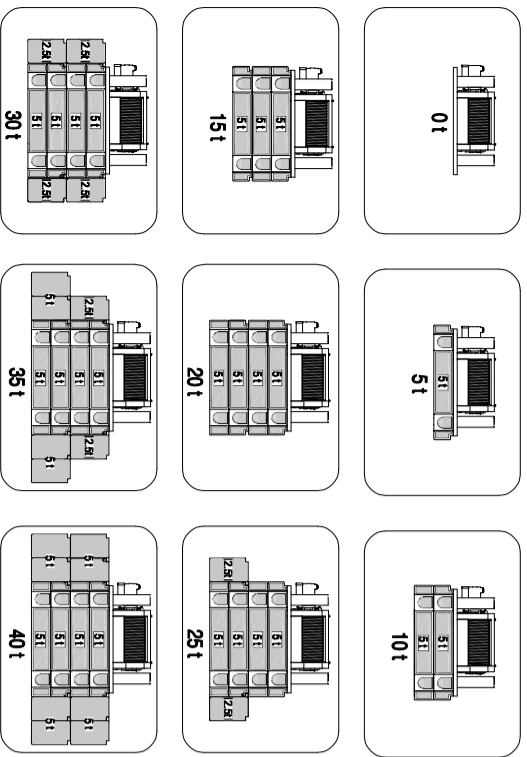
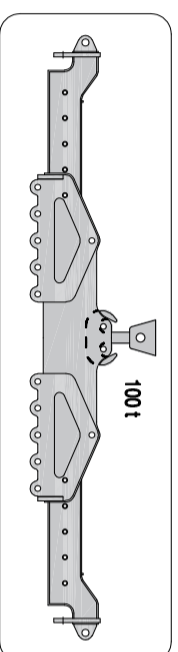


Contropeso divisibile con scarico automatico  
Divisible counterweight with automatic unloading



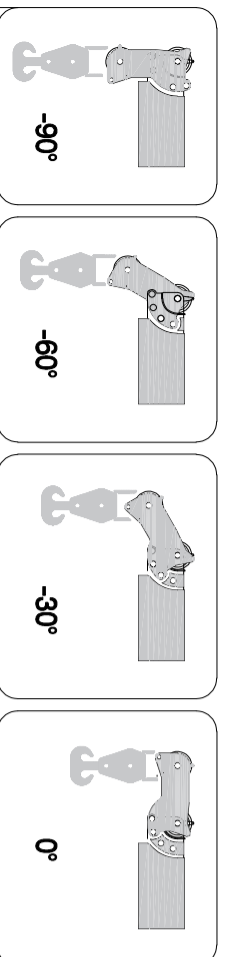
Bilancino di sollevamento da 5,5 m  
5,5 m lift spreader beams



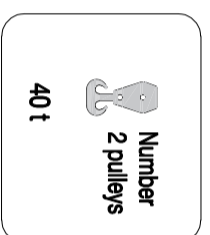
Argano principale  
Primary winch

- velocità max della fune al primo strato (m / '1') 32.5 - 65
- max speed of the rope at the 1st layer
- velocità max della fune all'ultimo strato (m / '1') 39 - 78
- max speed of the rope at the last layer
- fune d.23 - tiro fune 10,5 t
- rope d.23 - rope pull 10.5 t

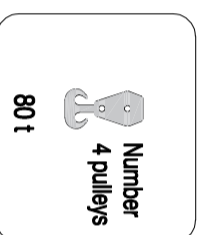
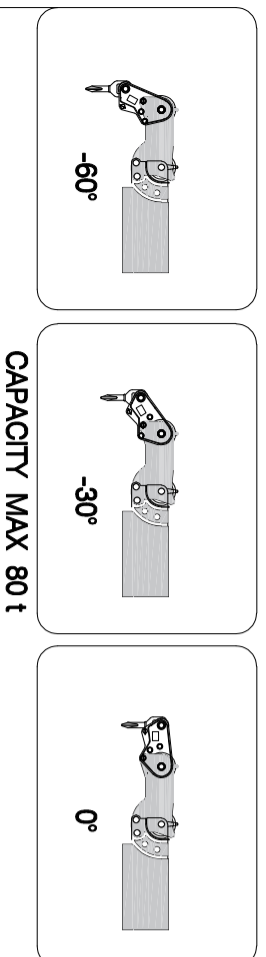
Testa del braccio inclinabile in quattro posizioni  
Four position reclining boom head



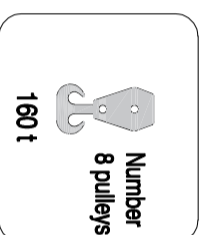
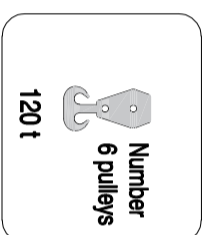
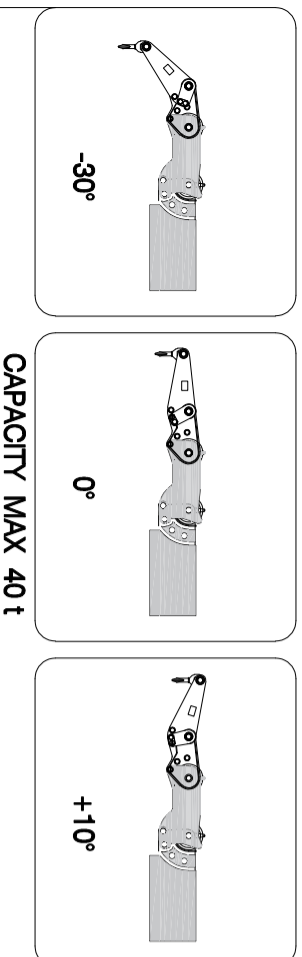
Bozzelli a gancio di varie capacità  
Hook blocks of various capacities



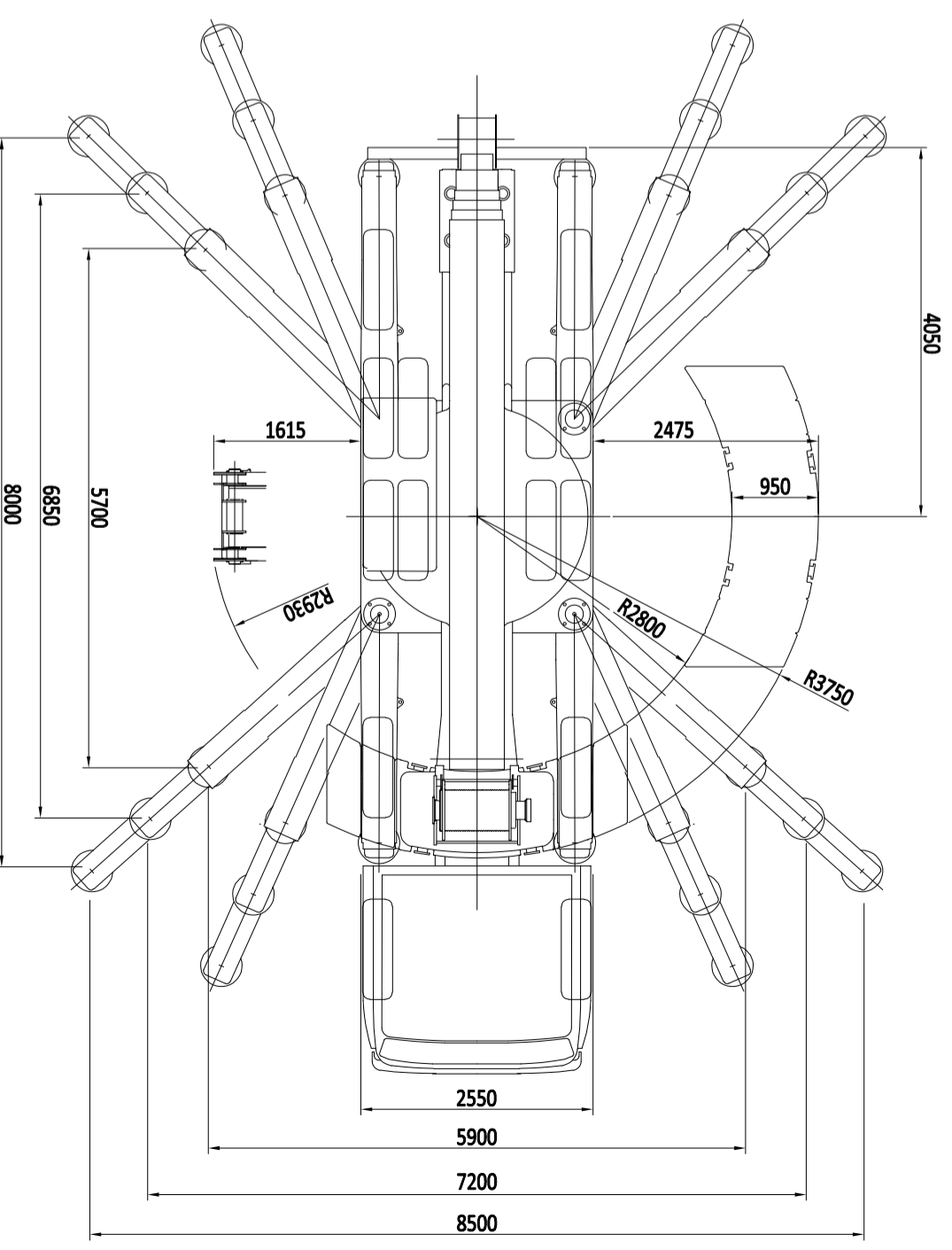
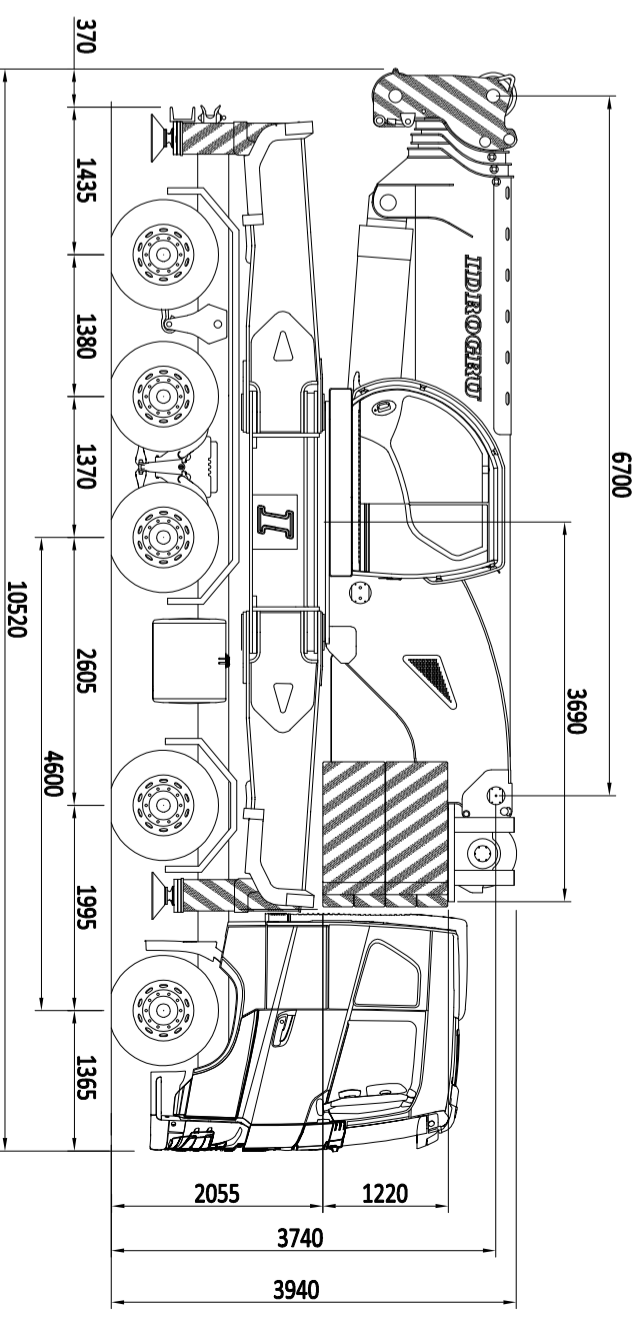
Supporto gancio da 0,7 m per testa del braccio inclinabile  
0,7 m hook or pulley for reclining boom head



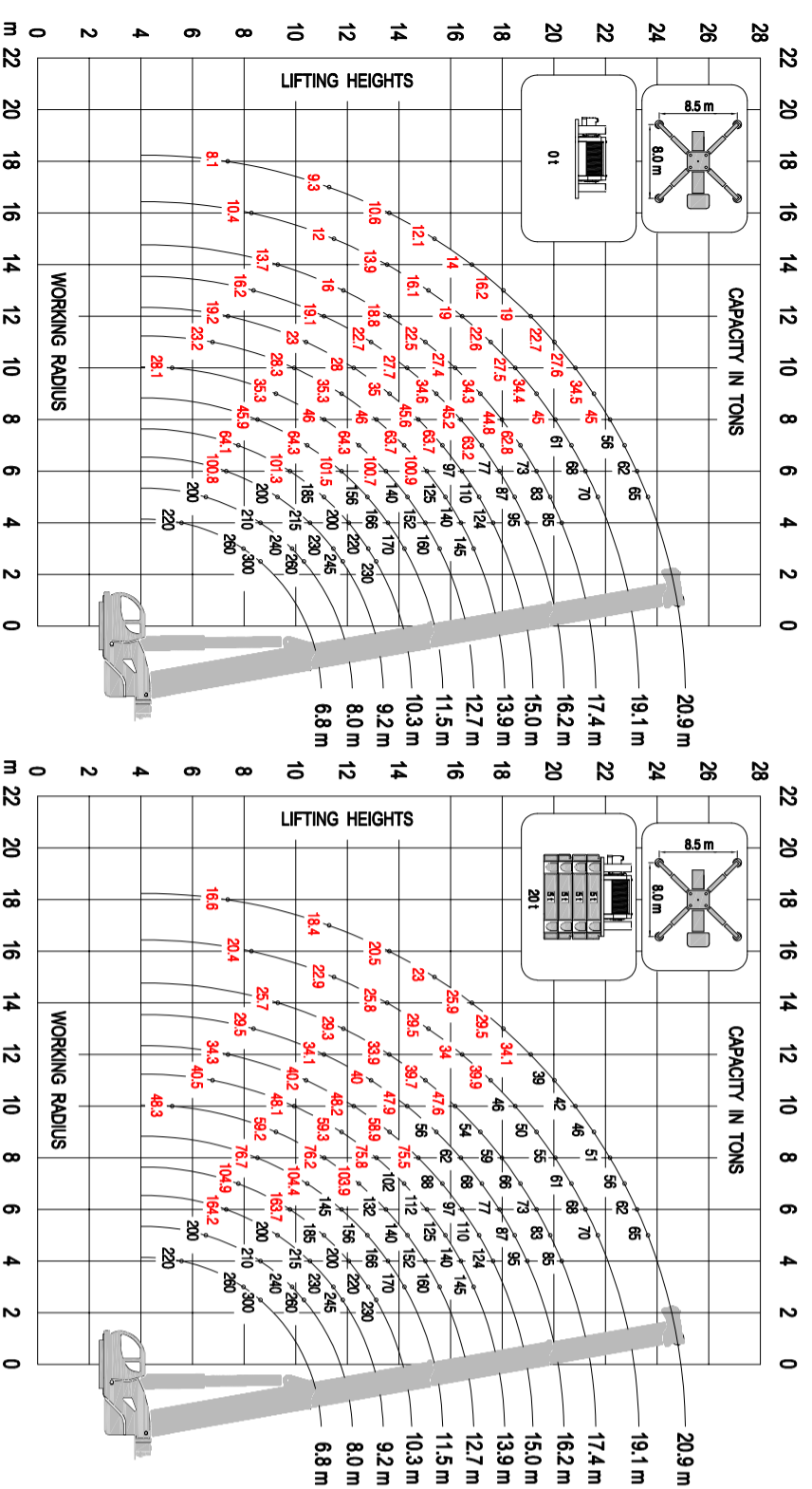
Supporto gancio da 1,7 m per testa del braccio inclinabile  
1,7 m hook or pulley for reclining boom head



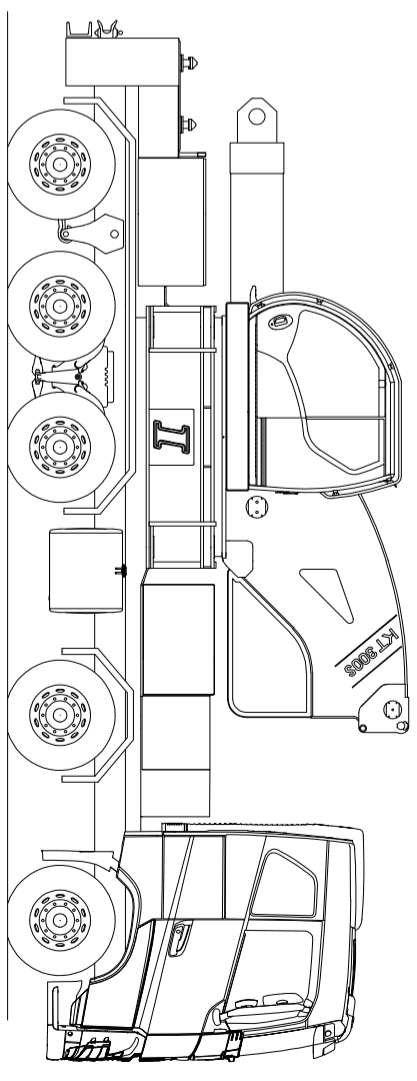
Le capacità di sollevamento nell'area strutturale si basano su DIN 15018 part 3 / FEM 5.004 / EN 13000  
The lifting capacities in the structural area are based on DIN 15018 part 3 / FEM 5.004 / EN 13000



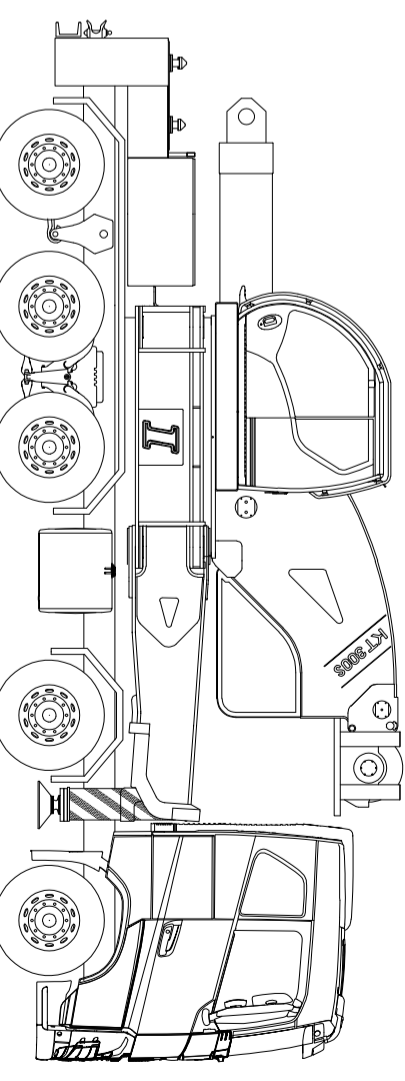
**Diagrammi di portata**  
**Load capacity diagrams**



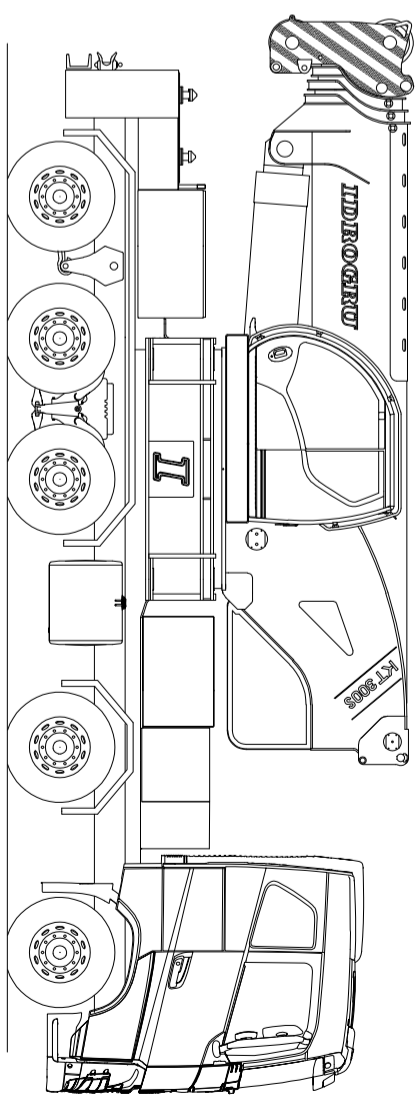
**Configurazione in ordine di marcia:**  
**Configuration in running order:**



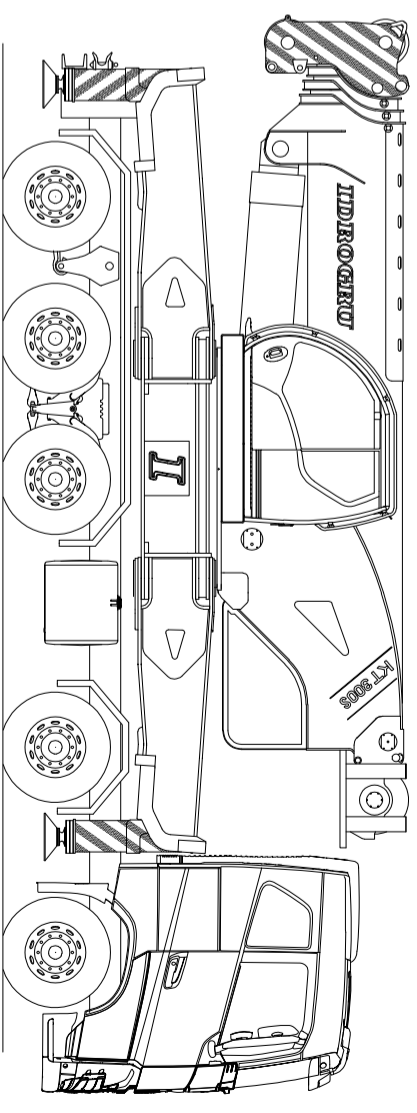
**Senza argano, braccio e stabilizzatori : peso tot. 32.000 Kg**  
**Without winch, boom and outriggers : total weight 32.000 Kg.**



**Senza braccio e stabilizzatori posteriori : peso tot. 40.000 Kg**  
**Without boom and rear outriggers : total weight 40.000 Kg.**



**Senza stabilizzatori e argano : peso tot. 44.000 Kg**  
**Without outriggers and winch : total weight 44.000 Kg.**



**Gru completa : peso tot. 54.000 Kg**  
**Complete Crane : total weight 54.000 Kg.**