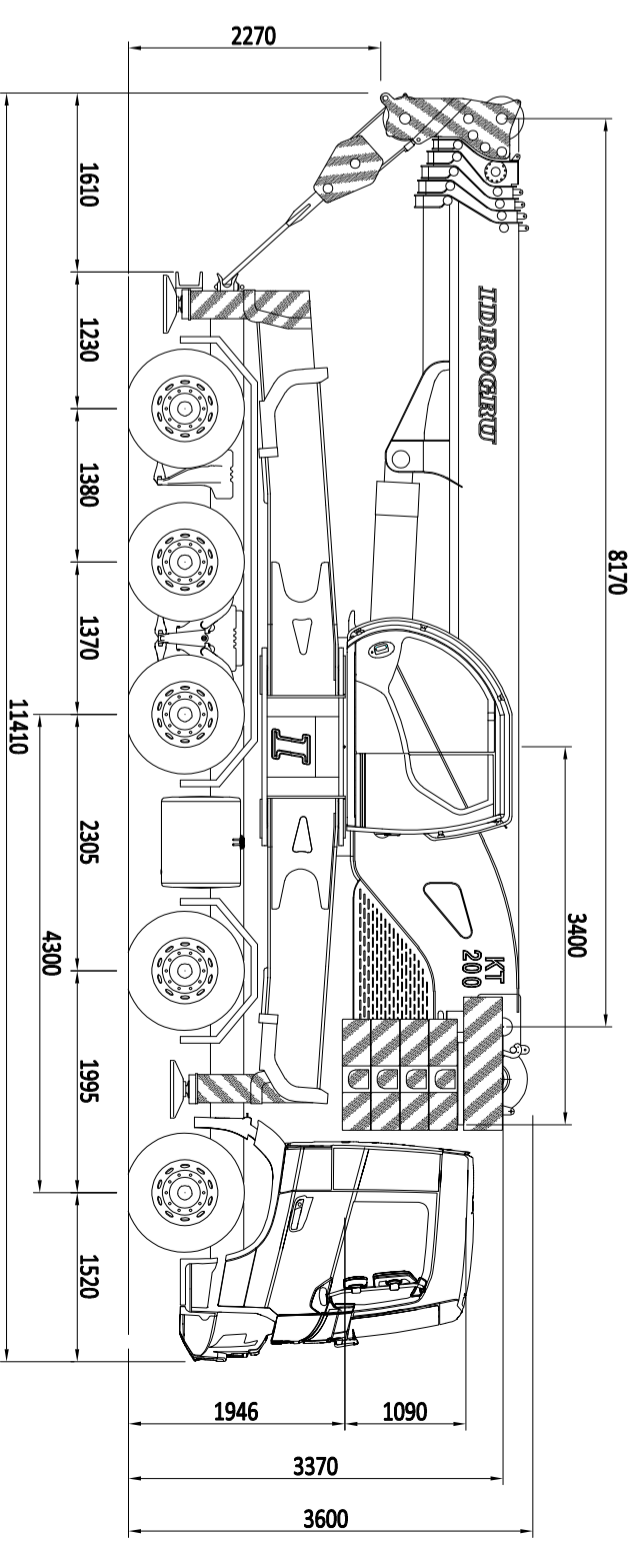
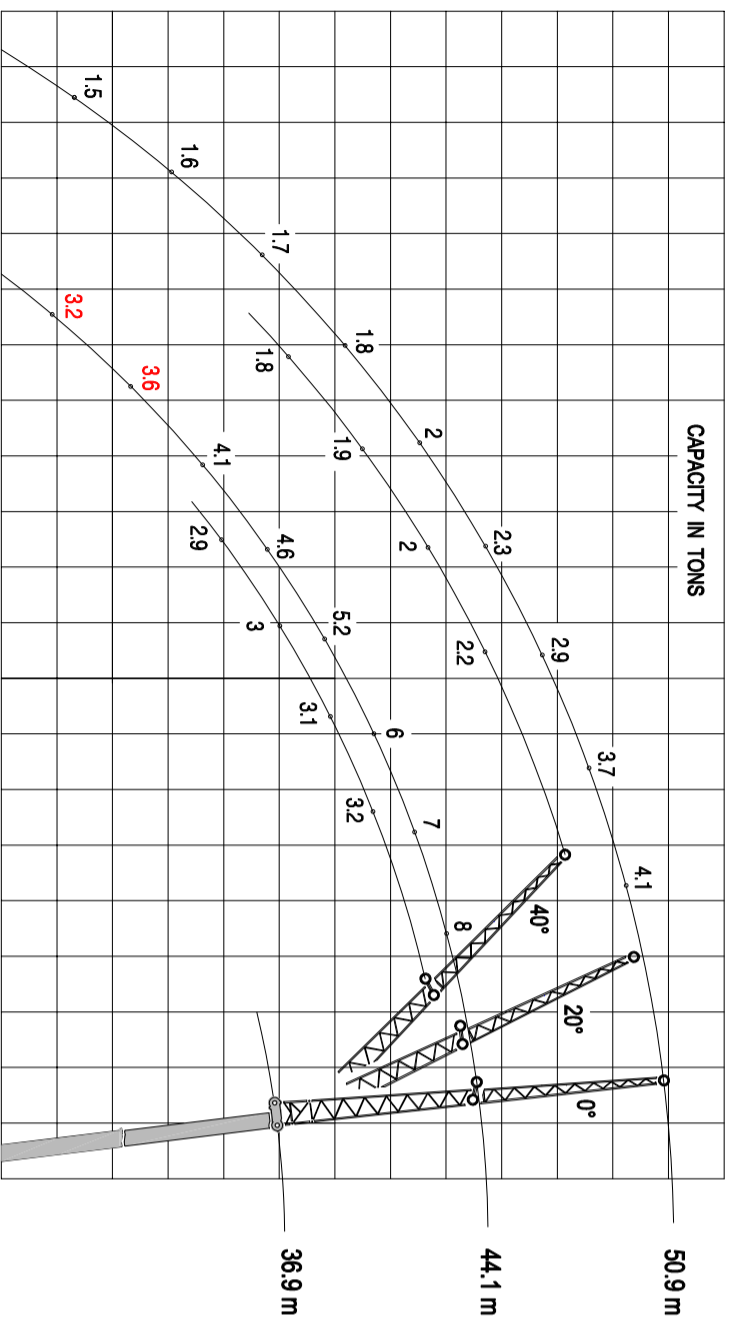
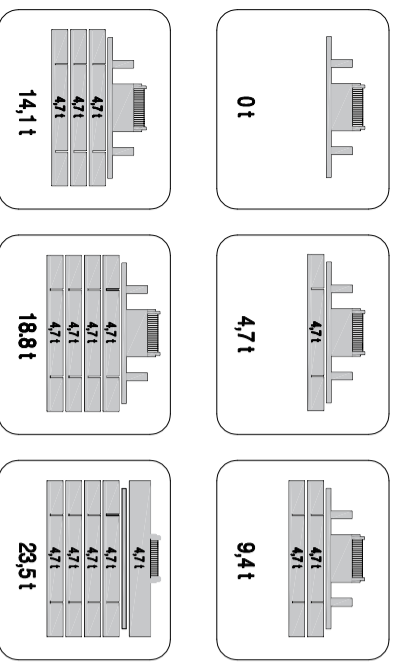


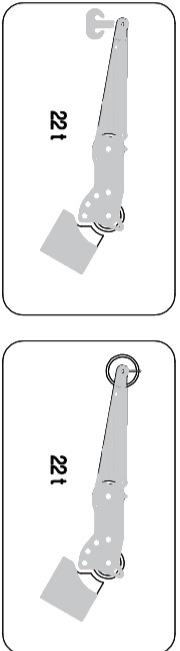
OPTIONAL EQUIPMENT: Reclinable trellis jib 7.2 / 1.4 m



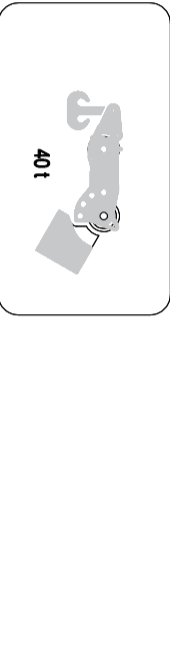
Divisible counterweight with automatic unloading



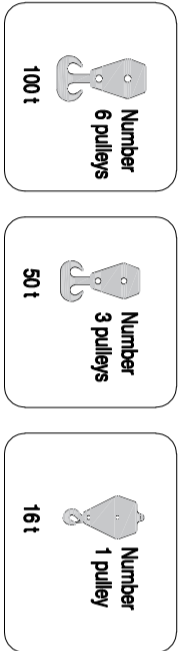
1,5 meters hook or pulley for reclinable boom head -60° -30° 0°



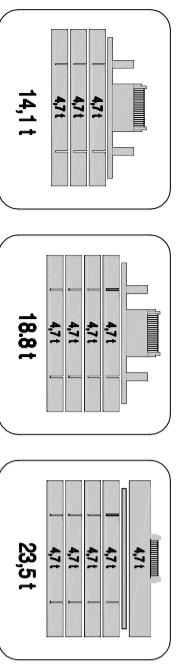
0,5 meters hook for reclinable boom head at -60° -30° 0°



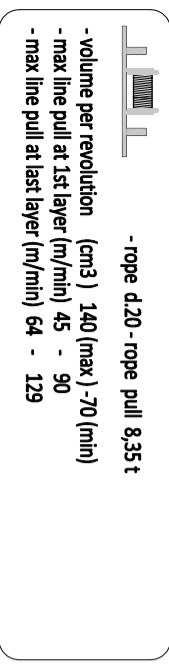
Hook blocks of various capacities



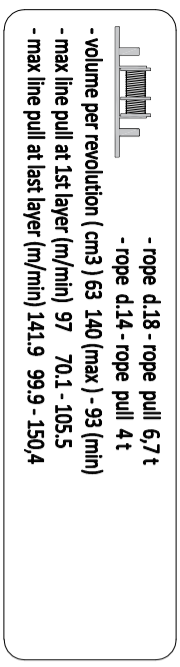
Three position reclinable boom head



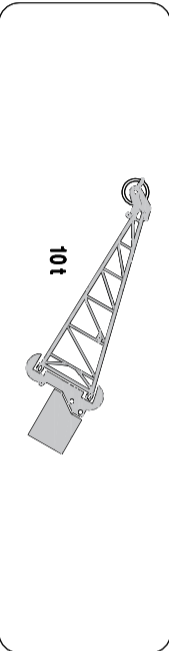
Primary winch



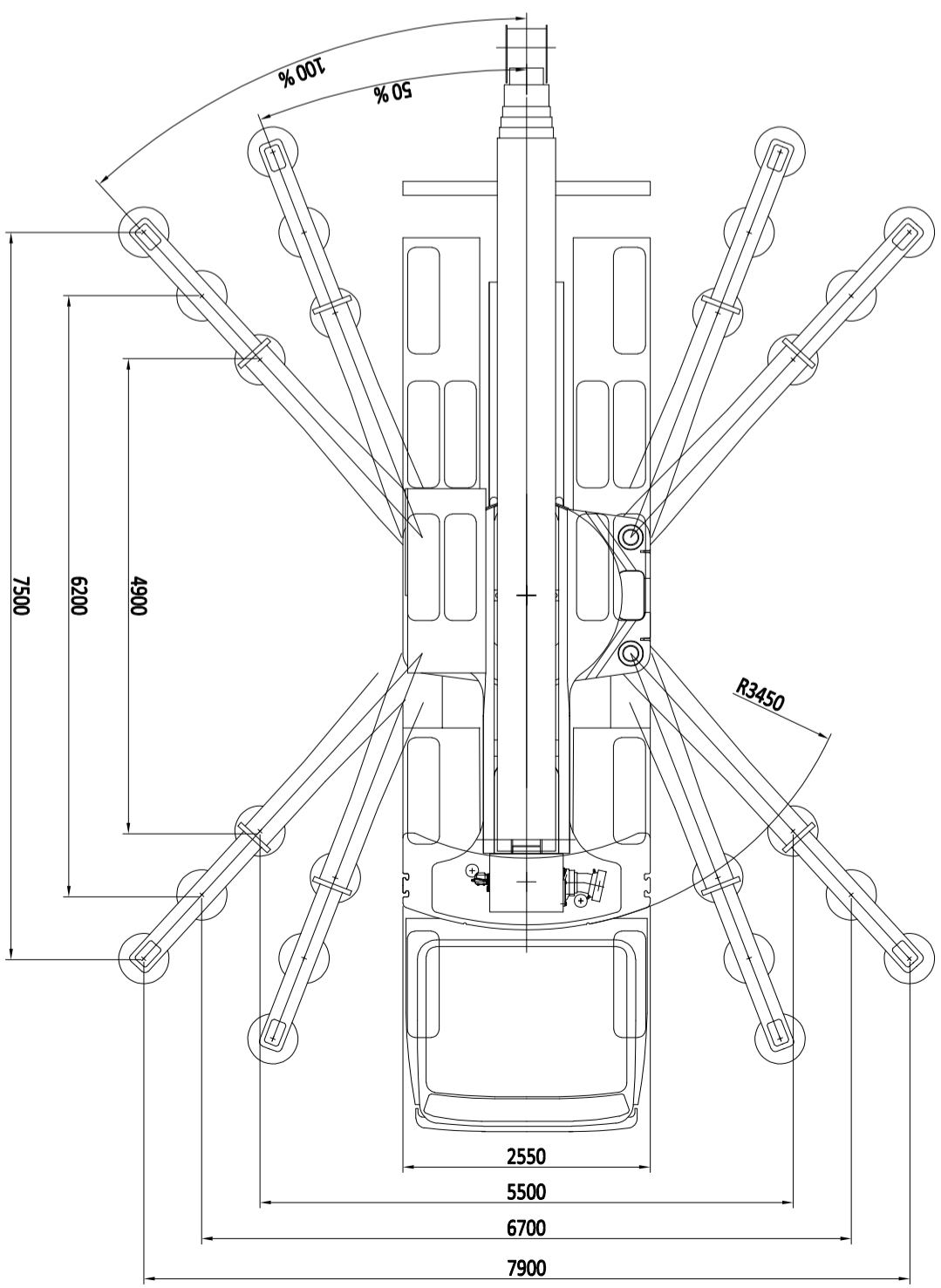
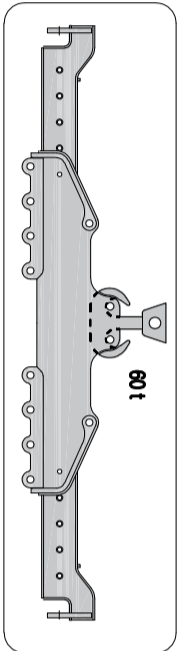
Double winch



3 meters trellis jib



3,7 meters lift spreader beams



The lifting capacities in the structural area are based on DIN 15018 part 3 / FEM 5.004 / EN 13000. The lifting capacities in the stability area are based on DIN 15019 part 2 / ISO 4305 / EN 13000.

