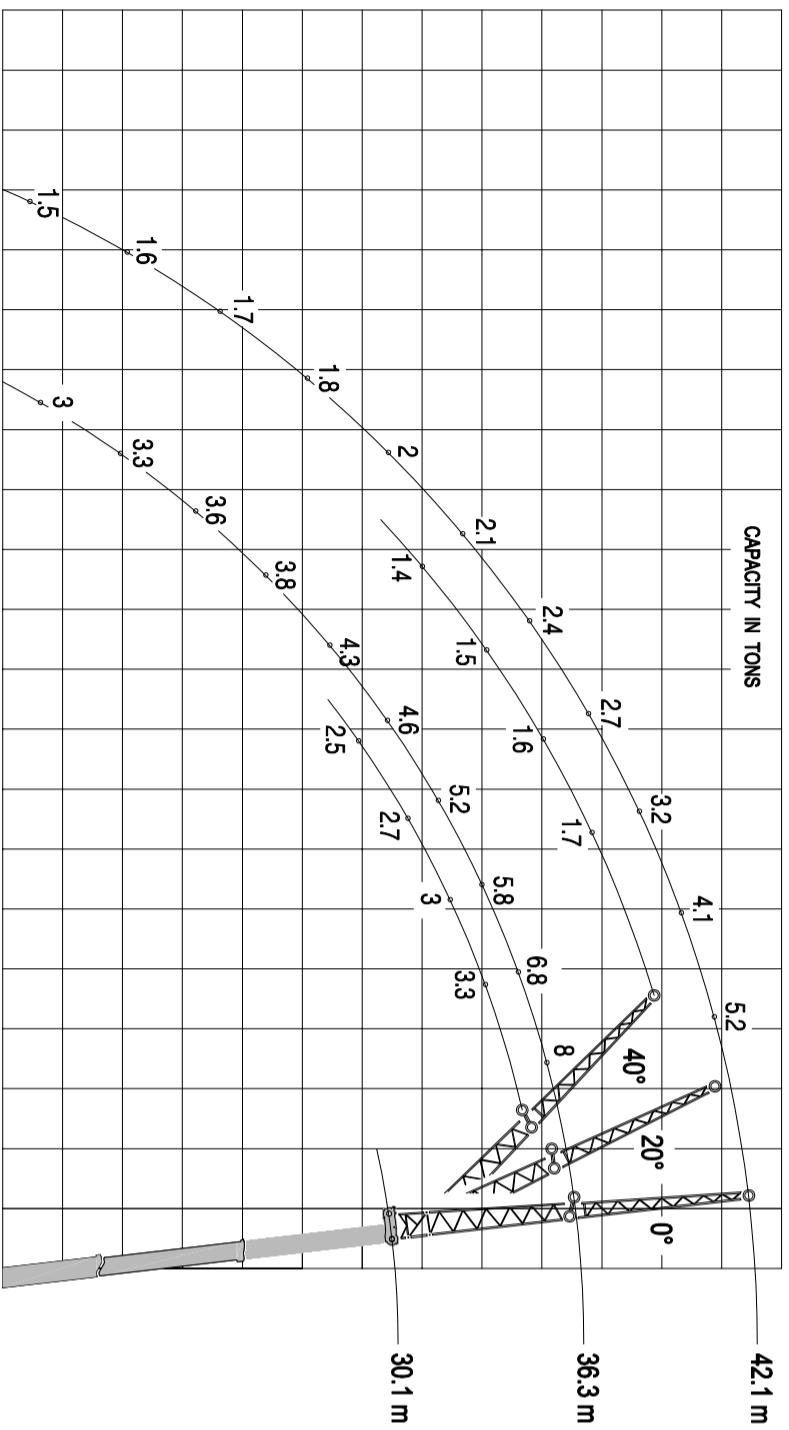
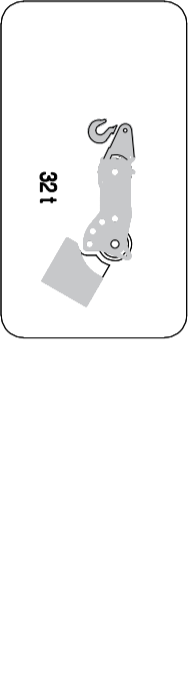
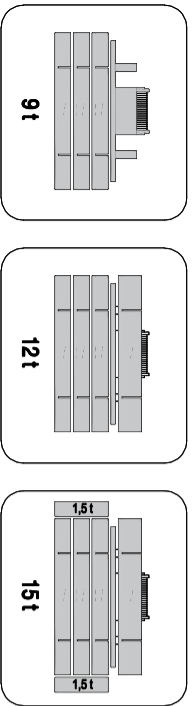
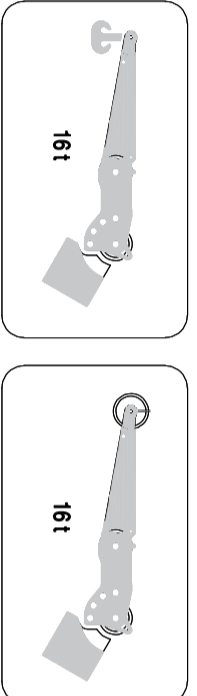
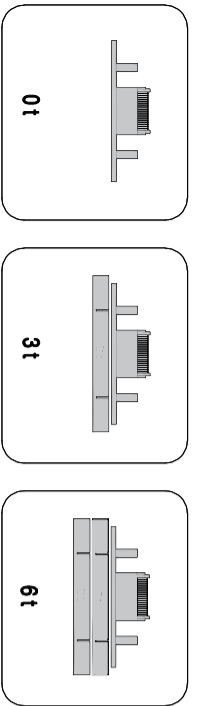


OPTIONAL EQUIPMENT: Reclinable tralls jib 6.2 / 12 m



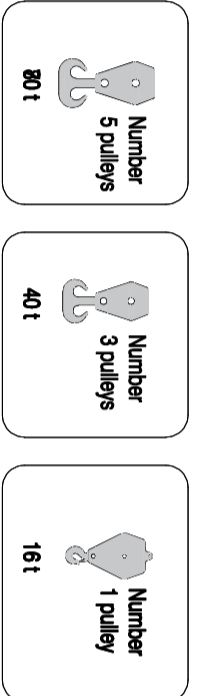
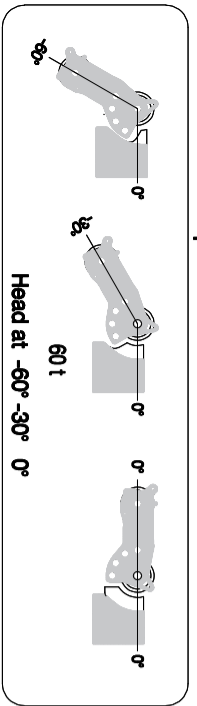
Divisible counterweight with automatic unloading

1.5 meters hook or pulley for reclinable boom head -60° -30° - 0°



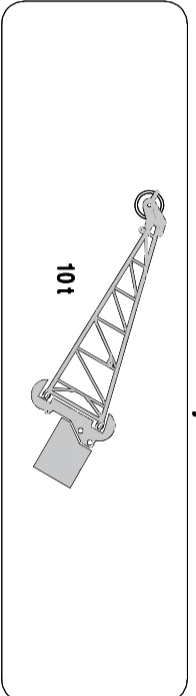
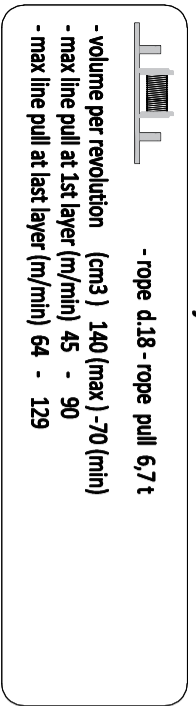
Three position reclinable boom head

Hook blocks of various capacities



Primary winch

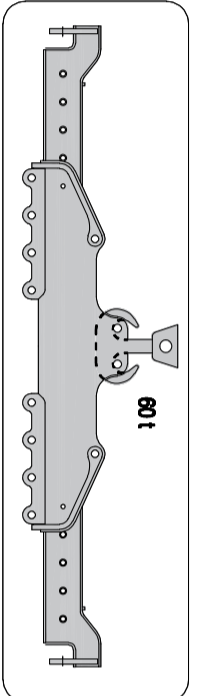
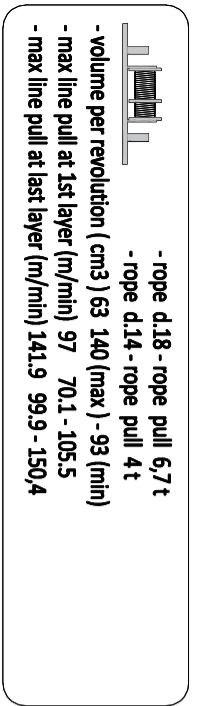
3 meters tralls jib



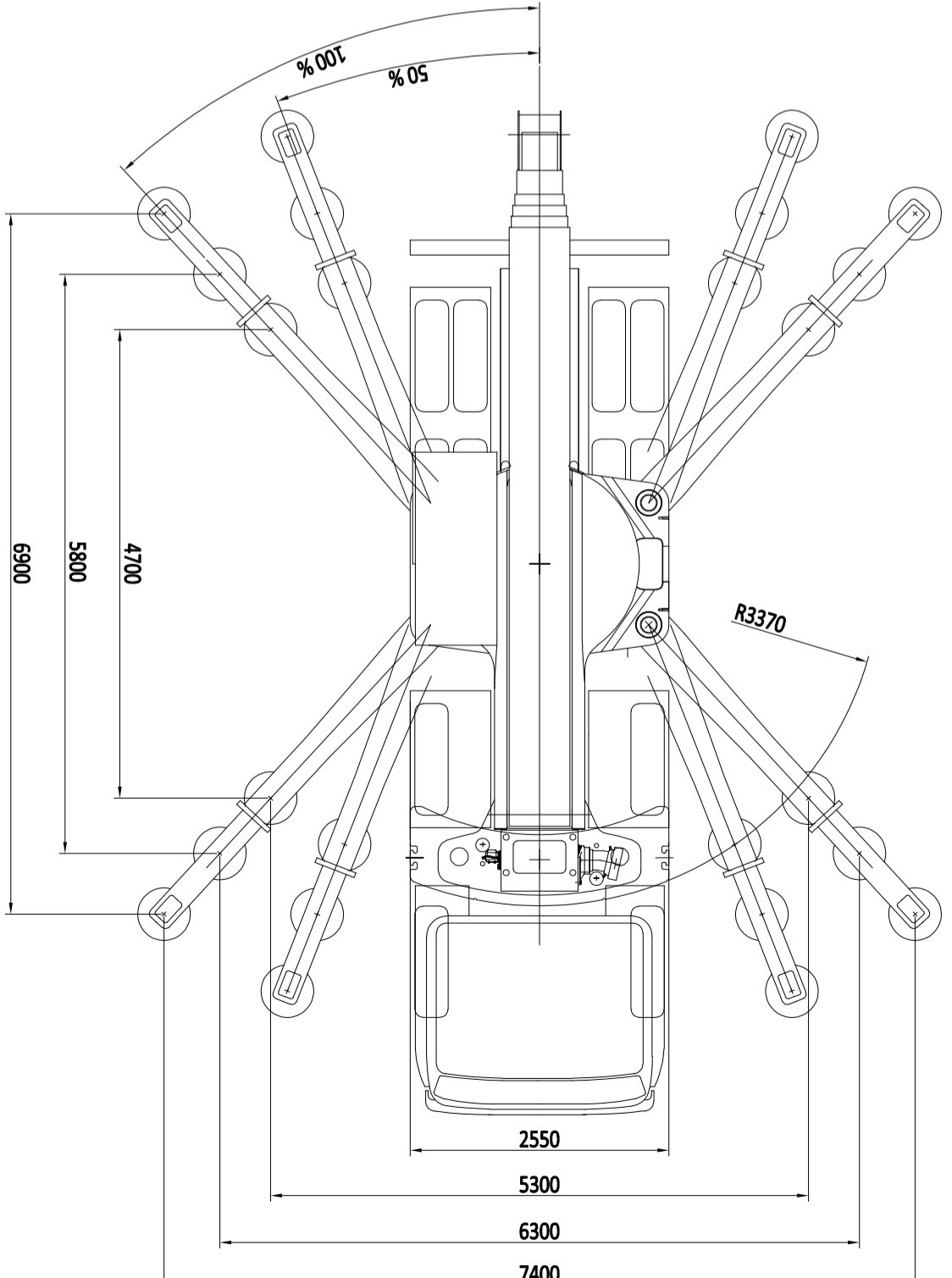
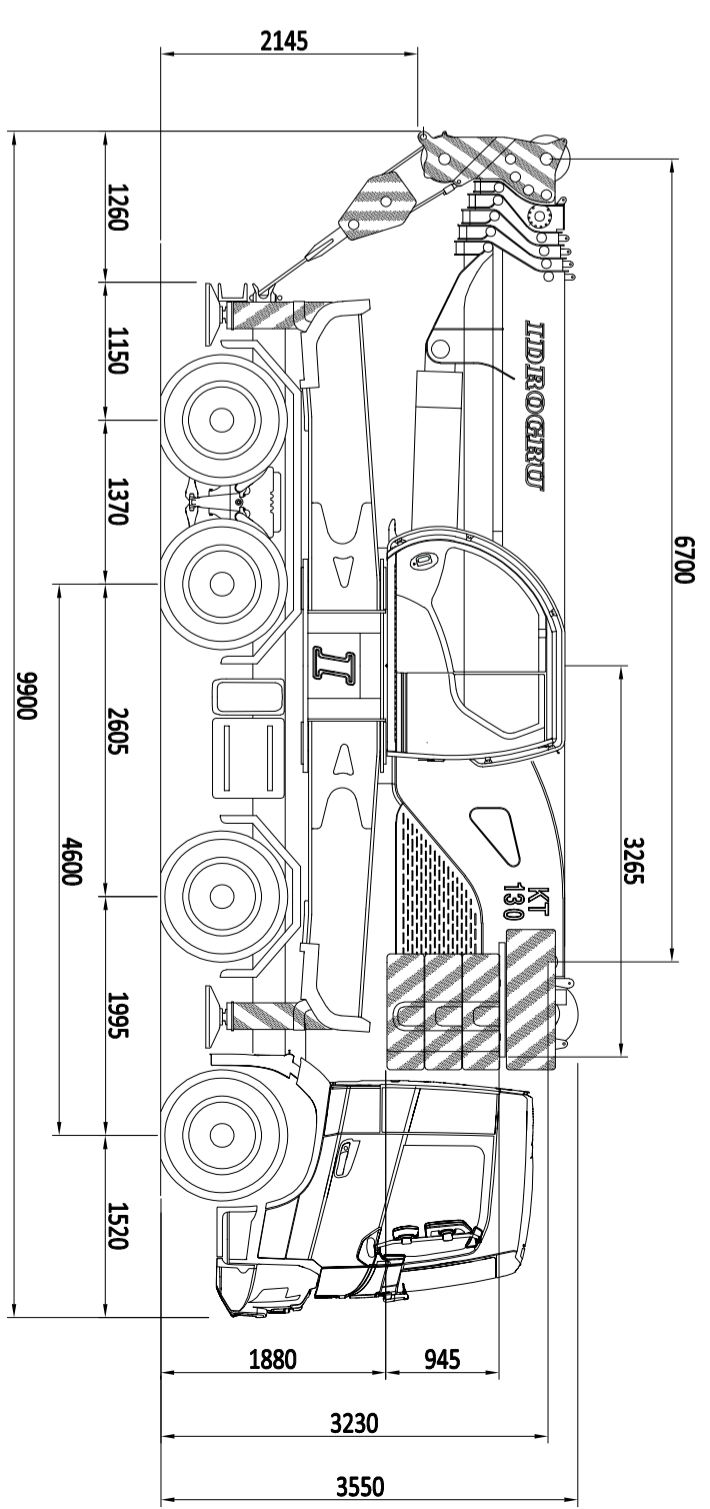
- rope d.18 - rope pull 6,7 t
- volume per revolution (cm³) 140 (max) -70 (min)
- max line pull at 1st layer (m/min) 45 - 90
- max line pull at last layer (m/min) 64 - 129

Double winch

3,7 meters lift spreader beams



- rope d.18 - rope pull 6,7 t
- rope d.14 - rope pull 4 t
- volume per revolution (cm³) 63 140 (max) - 93 (min)
- max line pull at 1st layer (m/min) 97 70,1 - 105,5
- max line pull at last layer (m/min) 141,9 99,9 - 150,4



The lifting capacities in the structural area are based on DIN 15018 part 3 / FEM 5.004 / EN 13000. The lifting capacities in the stability area are based on DIN 15019 part 2 / ISO 4305 / EN 13000

