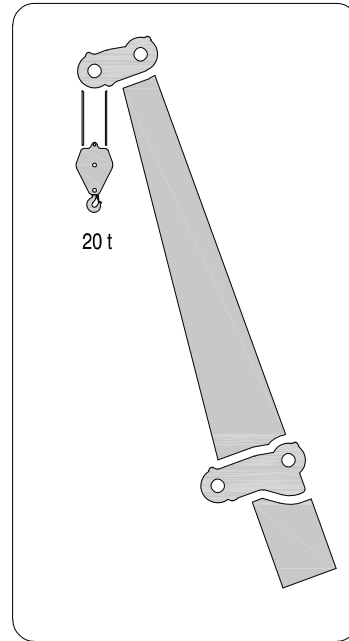
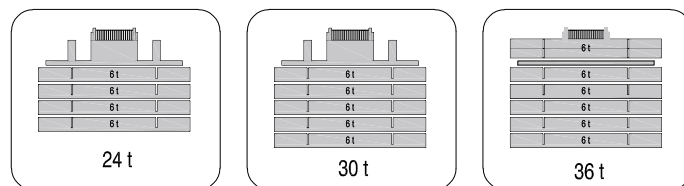
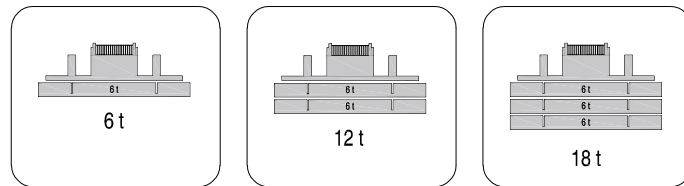


Optional equipment:

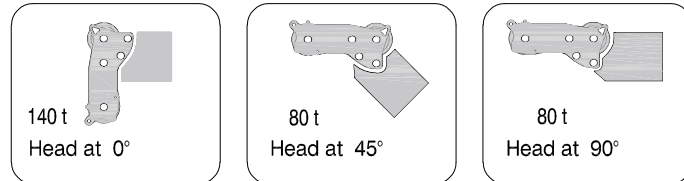
5 meters jib



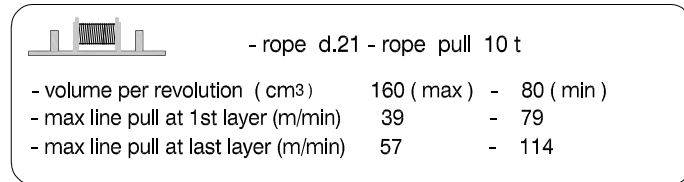
Divisible counterweight with automatic unloading



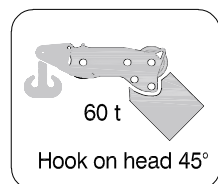
Three position reclinable boom head



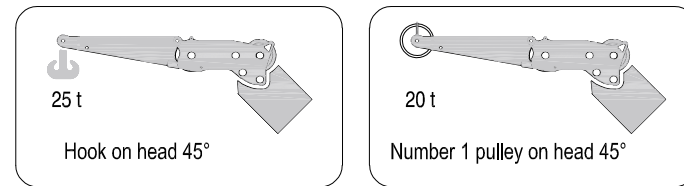
Primary winch



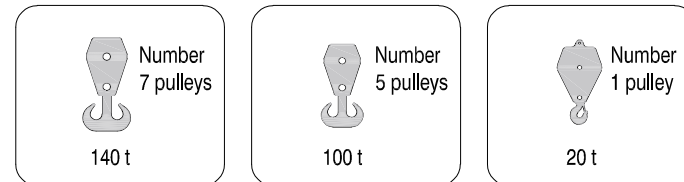
0,5 meters hook for reclinable boom head



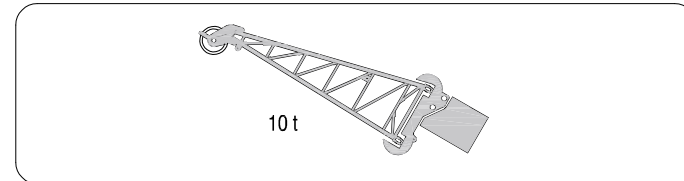
1,5 meters hook or pulley for reclinable boom head



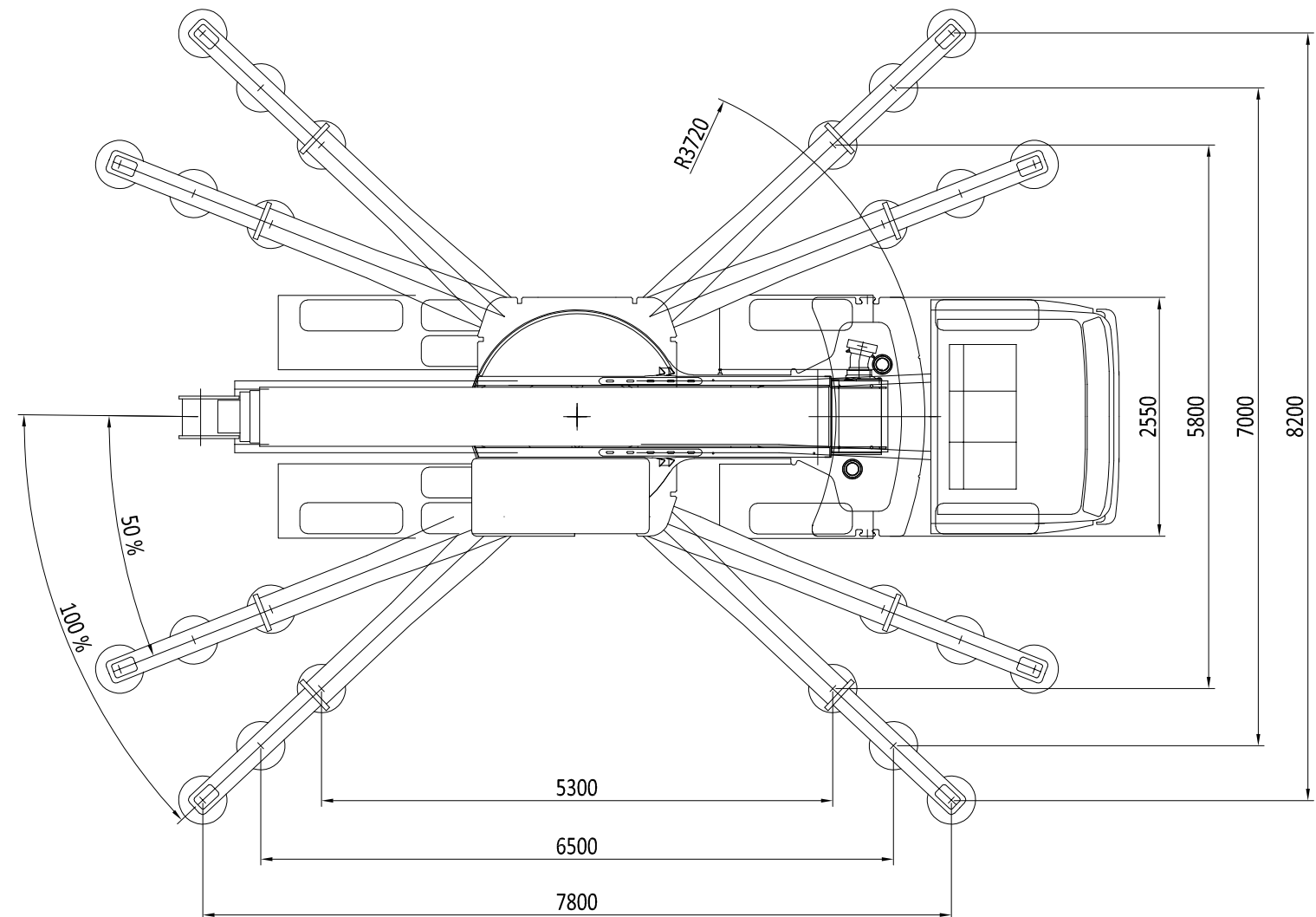
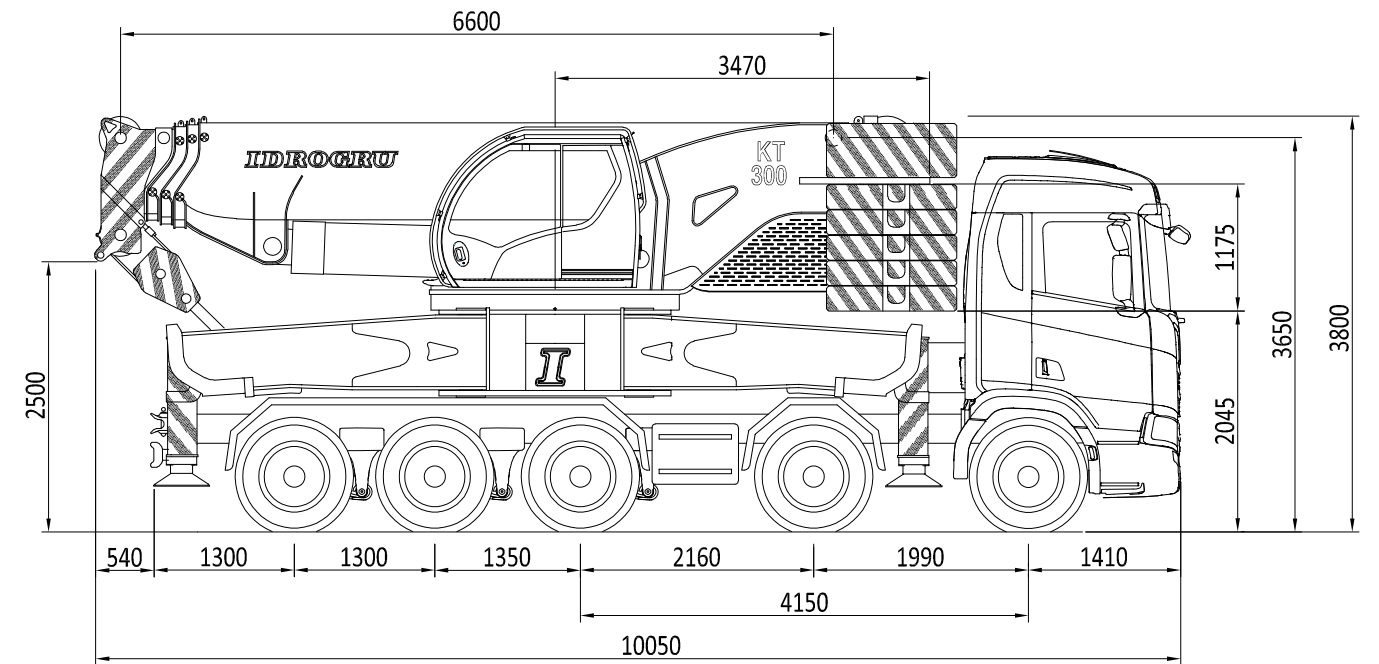
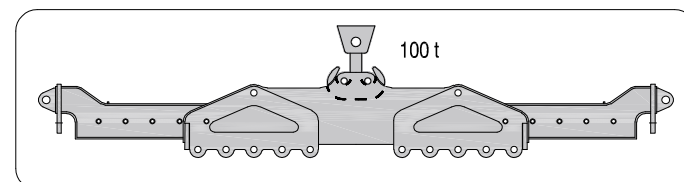
Hook blocks of various capacities

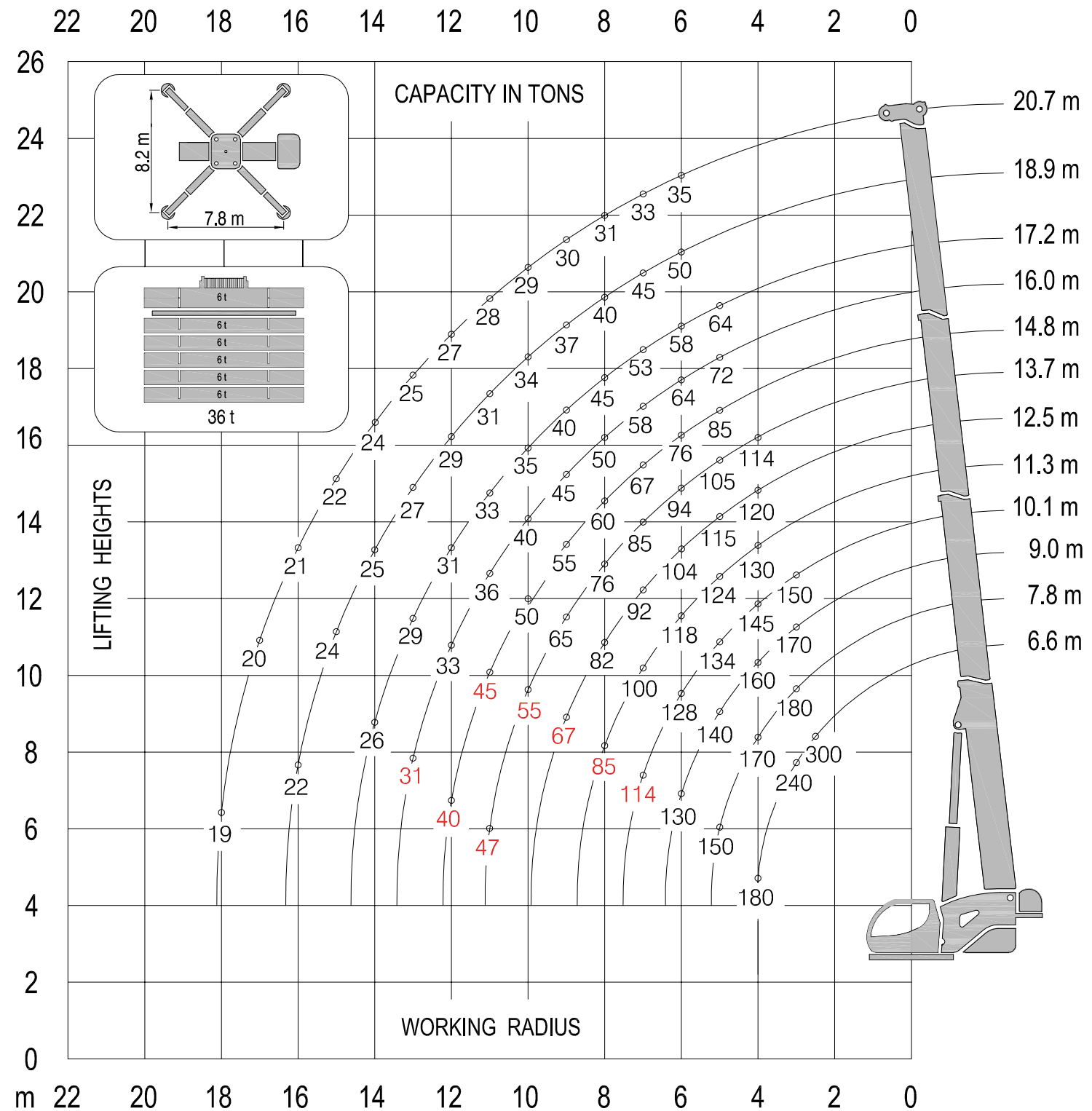
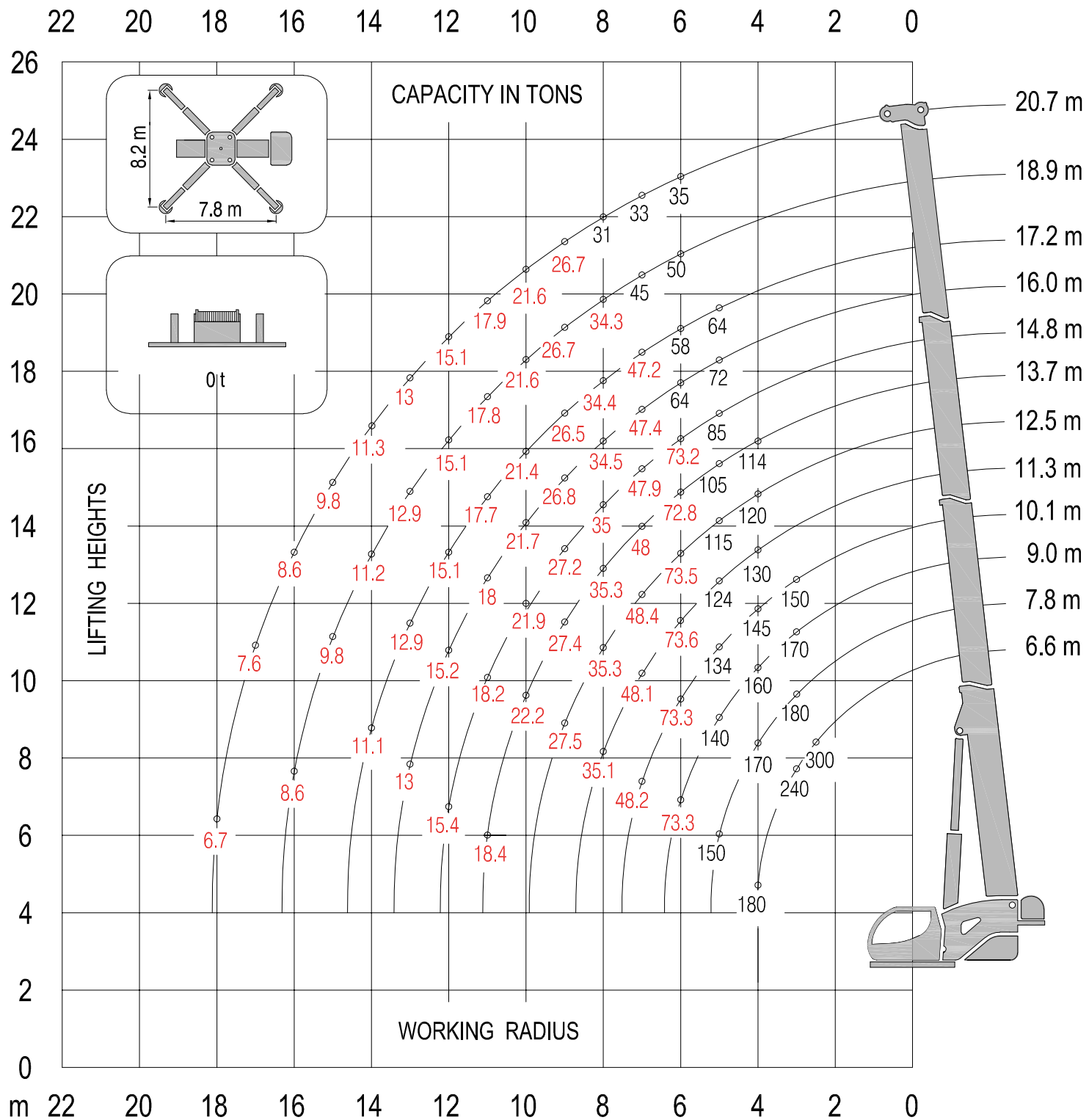


3 meters trellis jib



5,5 meters lift spreader beams





Max Payload: 140 t

The lifting capacities in the structural area are based on DIN 15018 part 3 / FEM 5.004 / EN 13000.
The lifting capacities in the stability area are based on DIN 15019 part 2 / ISO 4305 / EN 13000.