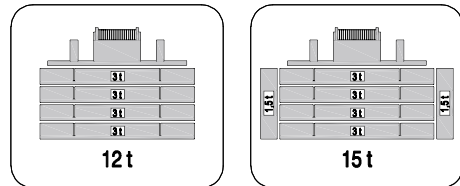
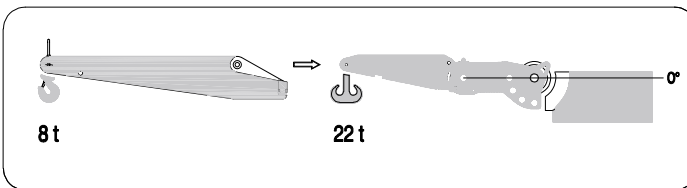
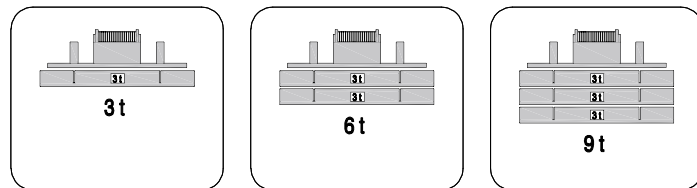
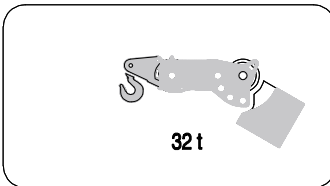


Divisible counterweight with automatic unloading

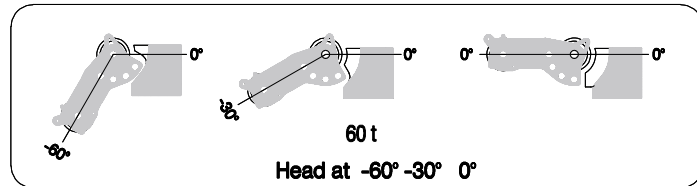
1,5 meters mechanic jib (for hook or pulley) with an extension of 1,5 meters.



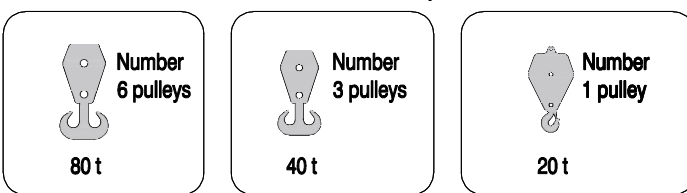
0,5 meters hook for reclinable boom head at -60° -30° 0°



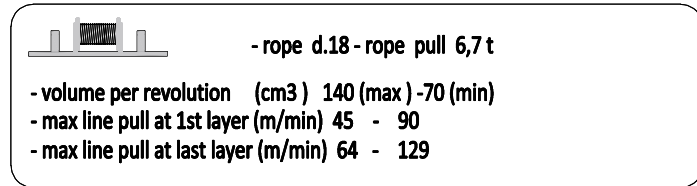
Three position reclinable boom head



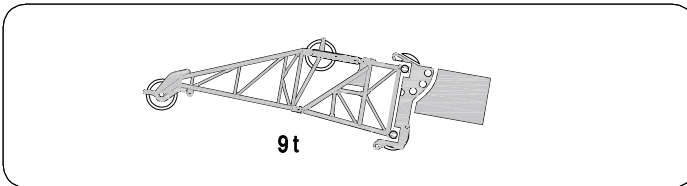
Hook blocks of various capacities



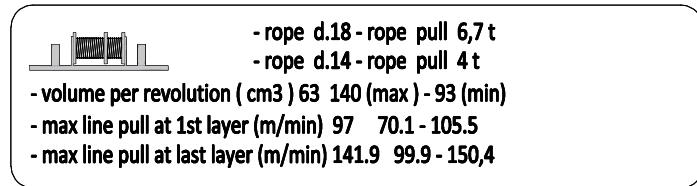
Primary winch



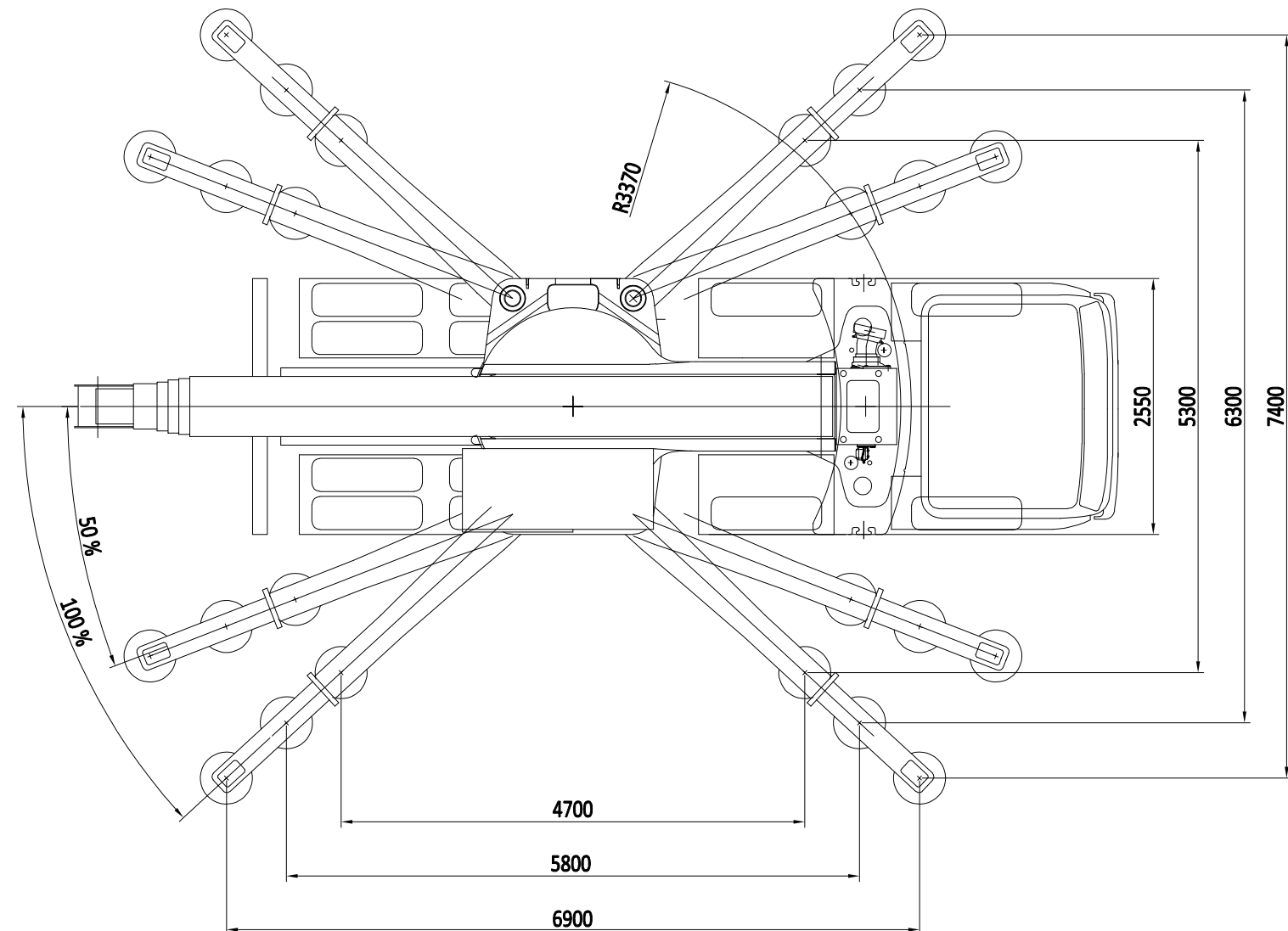
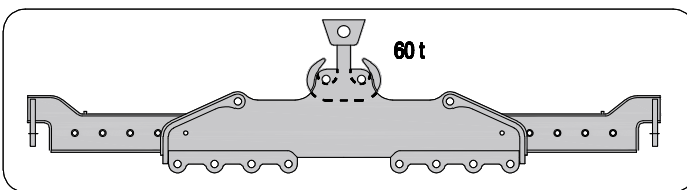
3 meters trellis jib

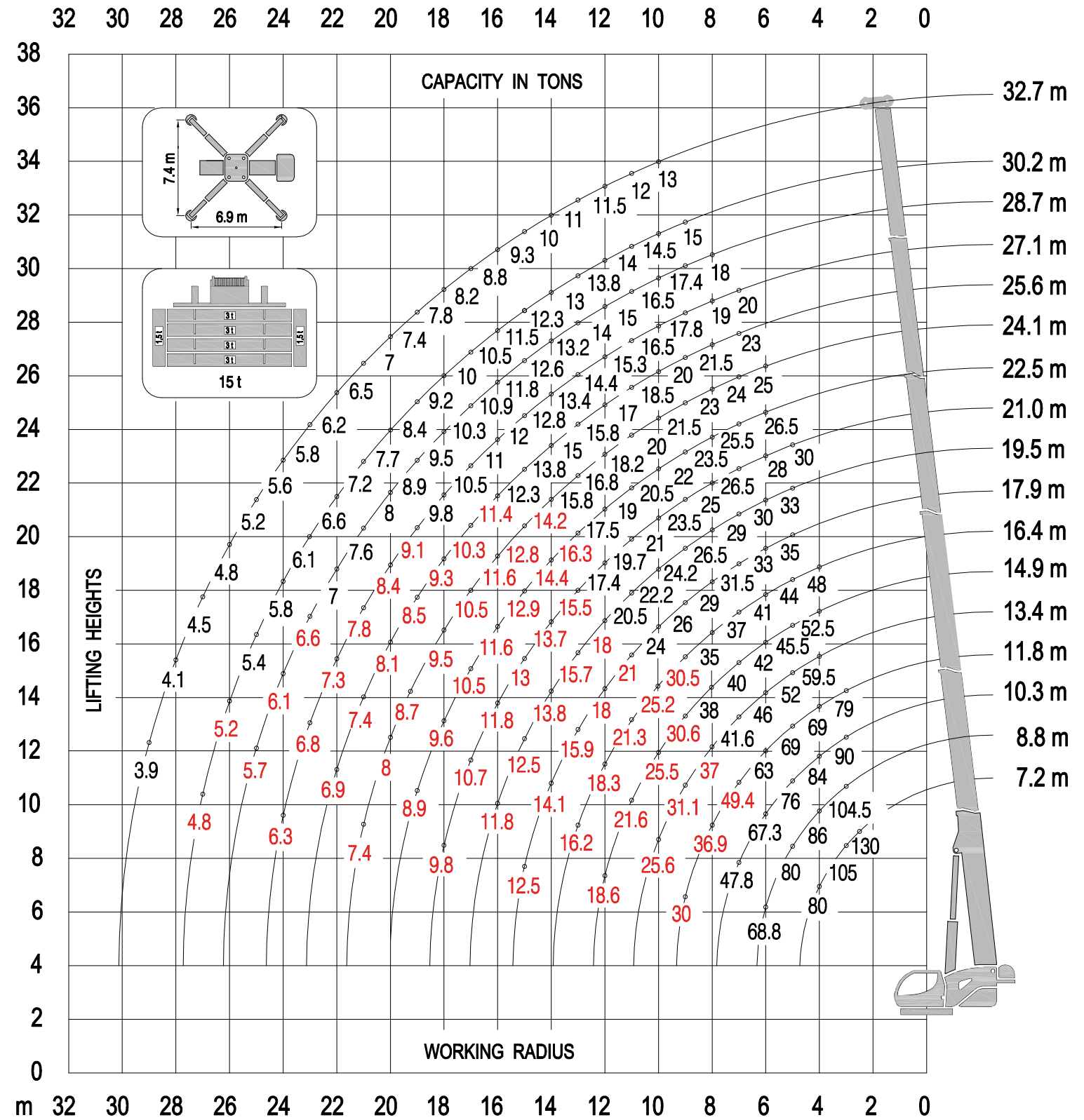
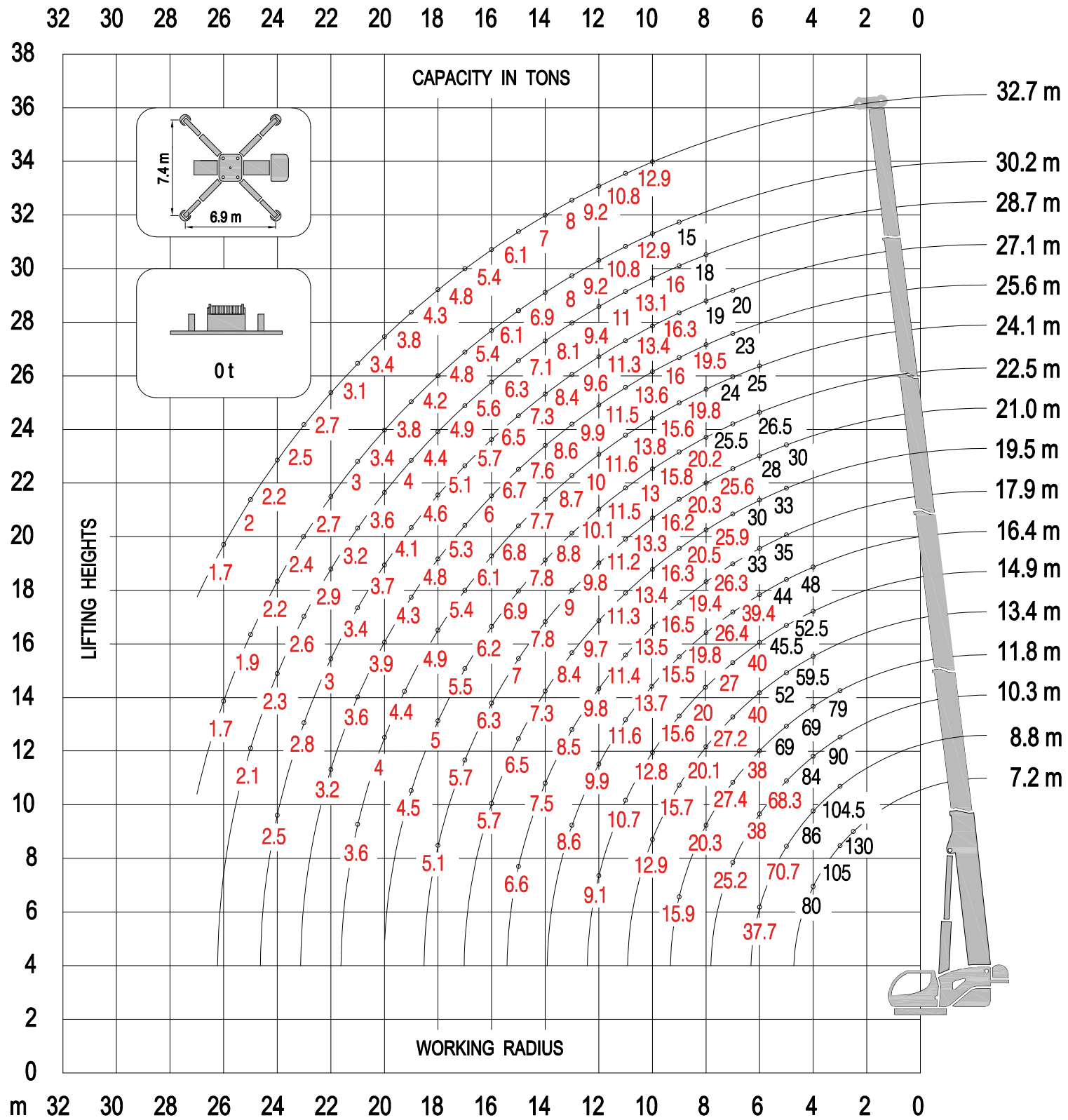


Double winch



3,7 meters lift spreader beams





Max Payload: 80 t

The lifting capacities in the structural area are based on DIN 15018 part 3 / FEM 5.004 / EN 13000.
The lifting capacities in the stability area are based on DIN 15019 part 2 / ISO 4305 / EN 13000.