

Divisible counterweight with automatic unloading

Three position reclinable boom head

Primary winch

- rope d.20 - rope pull 8,35 t
- volume per revolution (cm³) 140 (max) - 70 (min)
- max line pull at 1st layer (m/min) 45 - 90
- max line pull at last layer (m/min) 64 - 129

Double winch

- rope d.18 - rope pull 6,7 t
- rope d.14 - rope pull 4 t
- volume per revolution (cm³) 63 140 (max) - 93 (min)
- max line pull at 1st layer (m/min) 97 70,1 - 105,5
- max line pull at last layer (m/min) 141,9 99,9 - 150,4

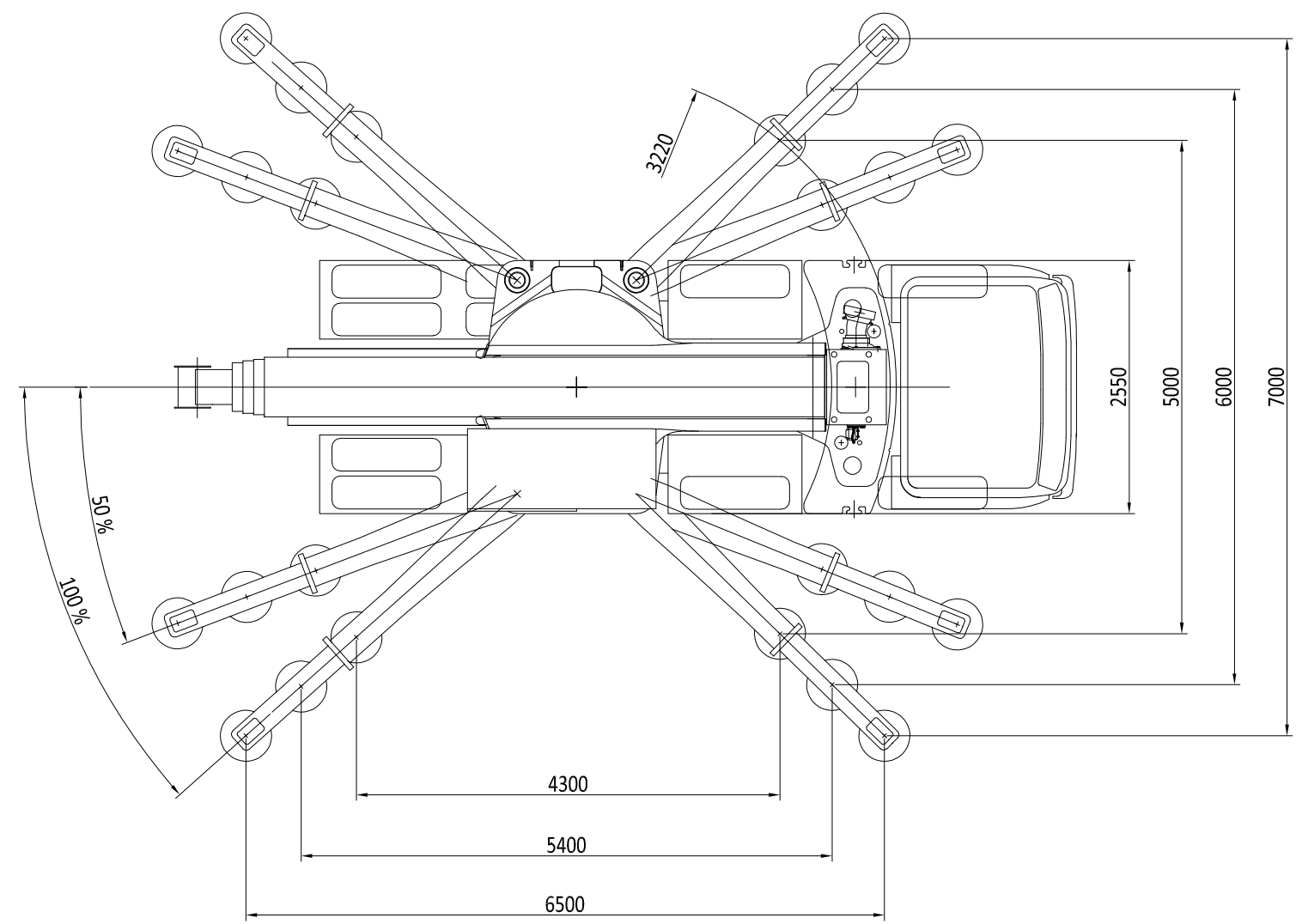
0,5 meters hook for reclinable boom head

1,5 meters hook or pulley for reclinable boom head

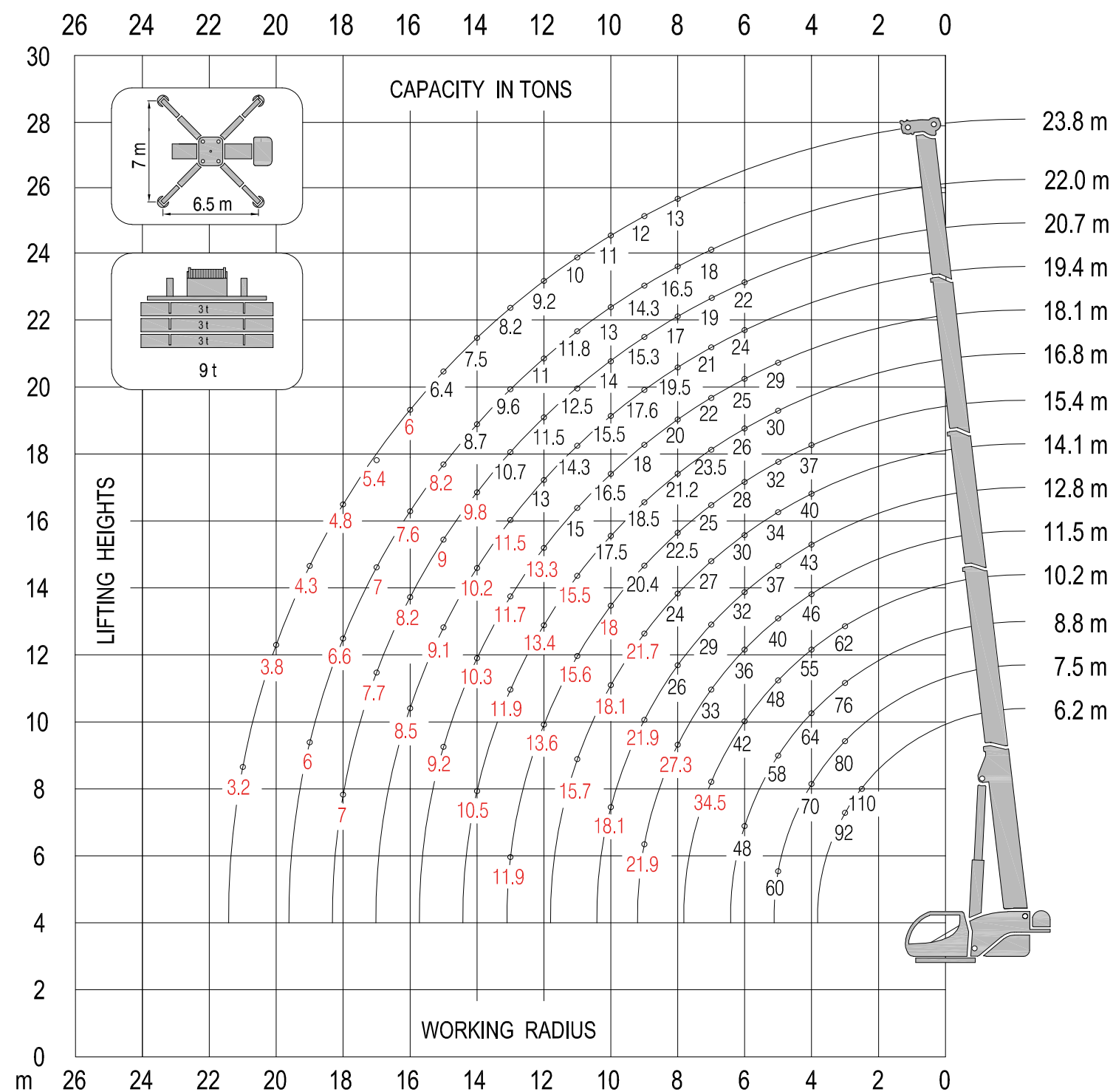
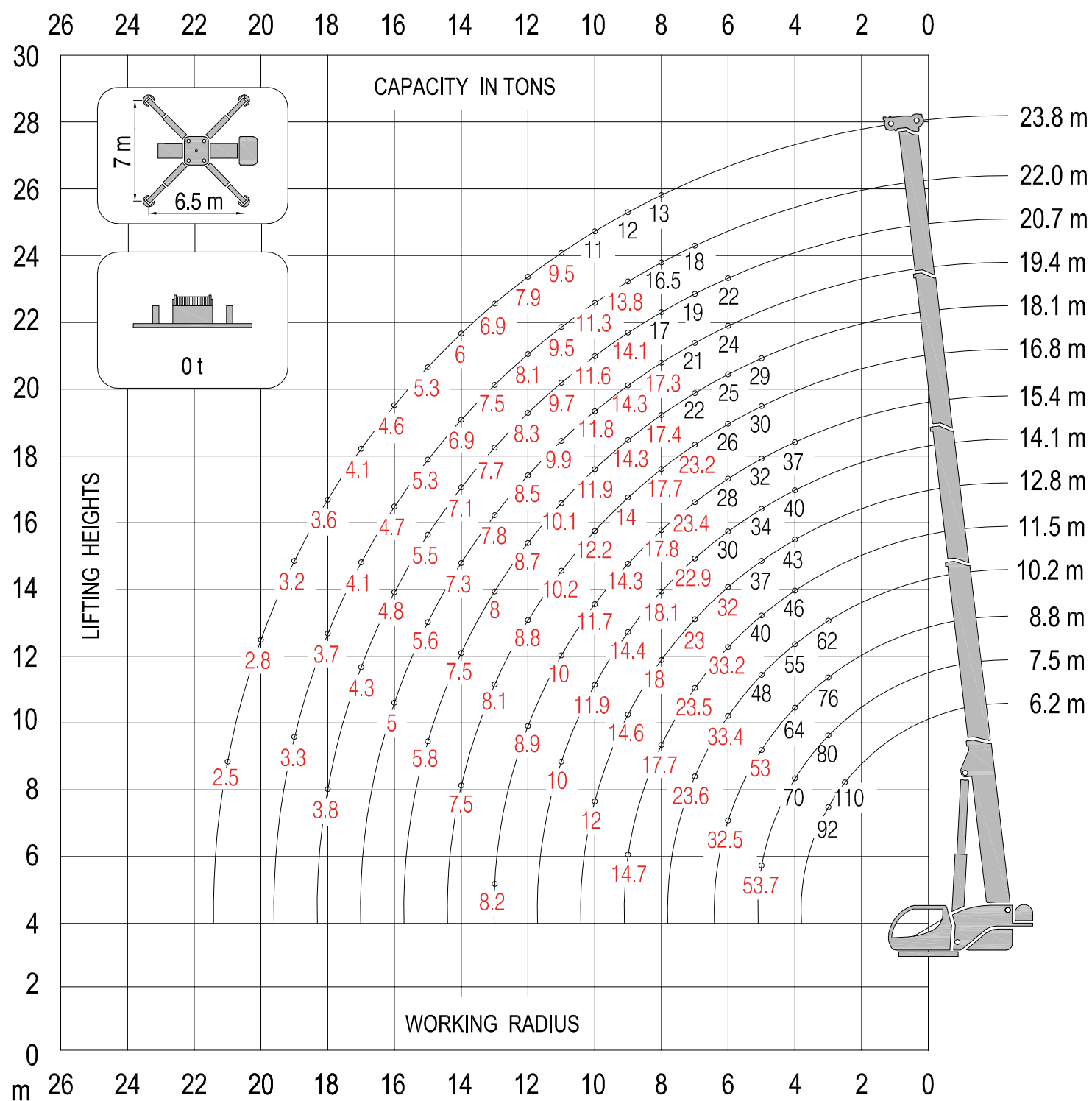
Hook blocks of various capacities

3 meters trellis jib

3,7 meters lift spreader beams



The lifting capacities in the structural area are based on DIN 15018 part 3 / FEM 5.004 / EN 13000.
The lifting capacities in the stability area are based on DIN 15019 part 2 / ISO 4305 / EN 13000



Max Payload: 70 t

The lifting capacities in the structural area are based on DIN 15018 part 3 / FEM 5.004 / EN 13000.
The lifting capacities in the stability area are based on DIN 15019 part 2 / ISO 4305 / EN 13000.